

Colligo Email Manager

White Labeling



CONTENTS

White Labeling 2

License Key and Registry Path..... 2

 Enabling Branding 2

 Disabling Branding 2

Using the MSI 3

Using Registry Settings..... 4

Branding Properties and Locations..... 5

 Root Folder Name 6

 Ribbon Group 6

 Ribbon Tab 6

 Ribbon Help Group 7

 Company Drop Down..... 7

 Drop Down Screentip..... 7

 DropDownSupertip 8

 Help 8

 About..... 8

 Product..... 9

 Need Help 9

 Product Support URL..... 9

 Search..... 10

 Options Dialog..... 10

 Launchpad Ribbon 10

 System Tray App Name 10

White Labeling

This document describes the fields and locations in Colligo Email Manager that you can brand with your company name and information, and provides a script with the keys that you can add to your registry.

License Key and Registry Path

All registry keys for Colligo Email Manager are located at the following file path:
HKCU\Software\Colligo\Contributor\Branding.

All branding settings are done using the registry. You can also configure the registry MSI properties for each setting so the registry values can be set at install time.

Enabling Branding

The following two things are required for white labeling to be applied:

1. You must have a branding-enabled license key, which you can purchase from Colligo
2. The registry key **EnableBranding** must be added to your registry and set to 1.

You have two options to modify the branding locations in the product:

- Add the branding settings to the MSI file and deploy the file to all users: see **Using the MSI**
- Update your users' registries with the branding registry keys: see **Using Registry Settings**

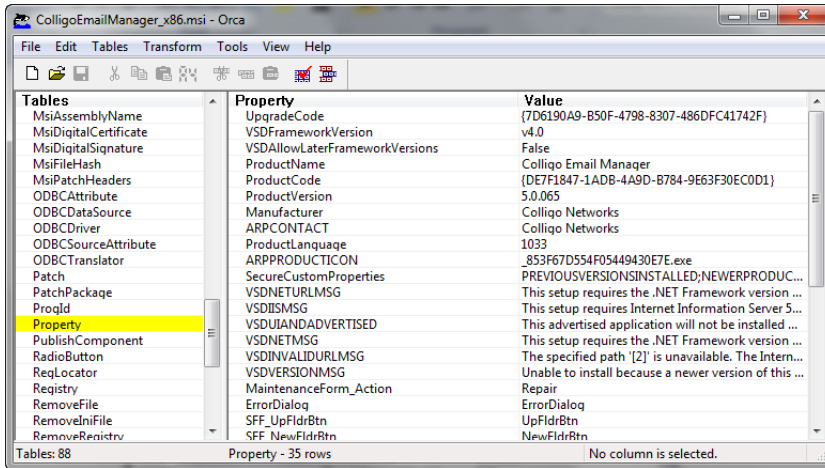
Disabling Branding

To disable branding you can install a license key that doesn't include branding capability, or you can set the registry key **EnableBranding** to **0**.

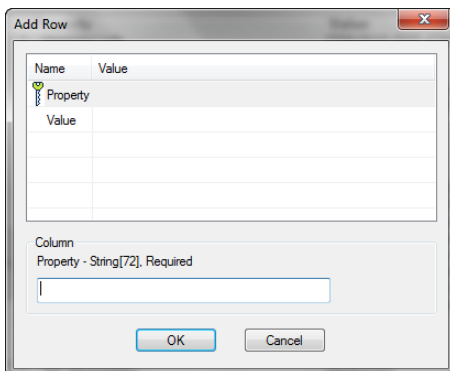
Using the MSI

To update the MSI file:

1. Download and install Orca, a Microsoft MSI editor, from the following location:
<http://support.colligo.com/Lists/Knowledge%20Base/DispForm.aspx?ID=4>
2. Open the MSI file in Orca.
3. Navigate to the **Property** table in the **Tables** list.



4. From the **Tables** menu, select **Add Row**.
The **Add Row** dialog displays:



5. Enter the **Property** name and **Value**.
6. Click **OK**.
The new property displays in the Property Table.
7. Using this approach, add all the relevant properties listed in **Using Registry Settings**.

Using Registry Settings

The following text is the registry script for the branding locations.

```
Windows Registry Editor Version 5.00

[HKEY_CURRENT_USER\Software\Colligo\Contributor]

[HKEY_CURRENT_USER\Software\Colligo\Contributor\Branding]
"About"="About XYZ"
"Product"="XYZ Email Manager"
"Help"="XYZ Help"
"NeedHelp"="XYZ Need Help"
"Search"="Search XYZ"
"RibbonGroup"="XYZ"
"RibbonHelpGroup"="XYZ"
"CompanyDropDown"="XYZ"
"DropDownScreentip"="XYZ"
"DropDownSupertip"="Access XYZ Email Manager functionality and
configuration."
"RibbonTab"="XYZ"
"LaunchpadConfigGroup"="XYZ Launchpad Config Group"
"OptionsDialog"="XYZ Options"
"ProductSupportUrl"="XYZ URL"
"SystemTrayAppName"="XYZ App Name"
"EnableBranding"="1"
```

These keys are not present by default in the registry.

To add them:

1. Copy and paste the script into Notepad.
2. Save the file as **.reg**.
3. Double-click the file to open it and add to the registry.
4. Enter your company name or the preferred wording in the second half of each key.

NOTE: The EnableBranding key must be present and set to 1 for all other settings to be applied.

Branding Properties and Locations

The following table describes the property names and registry keys for the different instances of branding throughout Email Manager.

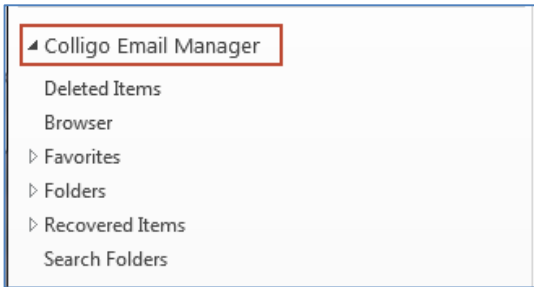
Usage	MSI Property Name	Registry Key	Default Value	Format
Enable branding functionality	ENABLE_BRANDING	Colligo/Contributor/Branding/EnableBranding	"1" = enabled	0 or 1
Name of PST file as shown in Outlook	ROOT_FOLDER_NAME*	Colligo/Contributor/EmailManager/RootFolderName		
Name of Email Manager group on Outlook home ribbon tab and Email Manager tab	BRANDING_RIBBON_GROUP	Colligo/Contributor/Branding/RibbonGroup	(empty)	Text
Name of Email Manager tab in Outlook ribbon	BRANDING_RIBBON_TAB	Colligo/Contributor/Branding/RibbonTab	(empty)	Text
Name of Email Manager group in new email	N/A	Colligo/Contributor/Branding/RibbonHelpGroup	(empty)	Text
Name of drop-down menu in Email Manager group on Home tab	N/A	Colligo/Contributor/Branding/CompanyDropDown	(empty)	Text
Company name on screentip for drop-down menu in Email Manager group on Home tab	N/A	Colligo/Contributor/Branding/DropDownScreentip	(empty)	Text
Description on screentip for drop-down menu in Email Manager group on Home tab	N/A	Colligo/Contributor/Branding/DropDownSupertip	(empty)	Text
About button name and about dialog	BRANDING_ABOUT	Colligo/Contributor/Branding/About	(empty)	Text
Product name as shown in About dialog	BRANDING_PRODUCT	Colligo/Contributor/Branding/Product		
Caption of Help button	BRANDING_HELP	Colligo/Contributor/Branding/Help	(empty)	Text
Title of Search pane	BRANDING_SEARCH	Colligo/Contributor/Branding/Search	(empty)	Text
Title of options dialog	BRANDING_OPTIONS_DIALOG	Colligo/Contributor/Branding/OptionsDialog	(empty)	Text
Need help text in About dialog	BRANDING_NEED_HELP	Colligo/Contributor/Branding/NeedHelp	(empty)	Text
Product support URL in About dialog	BRANDING_PRODUCT_SUPPORT_URL	Colligo/Contributor/Branding/ProductSupportUrl	(empty)	Text
Launchpad Ribbon	BRANDING_LAUNCHPAD_CONFIG_GROUP	Colligo/Contributor/Branding/LaunchpadConfigGroup	(empty)	Text
Product name that displays in system tray	SYSTEM_TRAY_APP_NAME	Colligo/Contributor/Branding/SystemTrayAppName	(empty)	Text

***NOTE:** The Outlook root folder name property (ROOT_FOLDER_NAME) is configurable without a branding license key.

NOTE: The enable branding functionality MSI/Registry key must be present and set to 1 for all other settings to be applied.

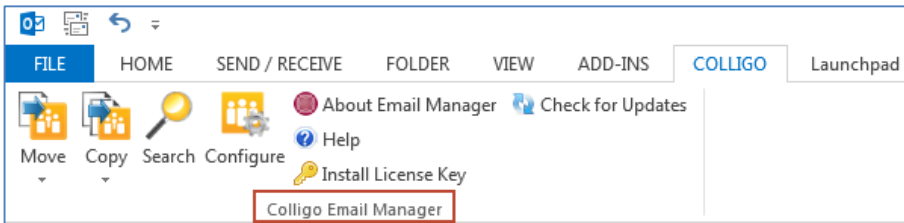
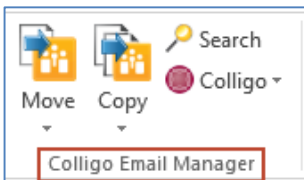
Root Folder Name

The registry key *RootFolderName* displays in the following location:



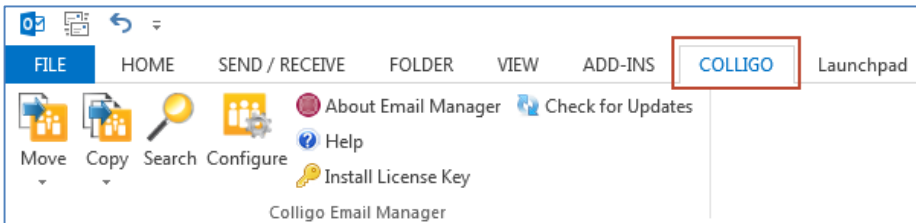
Ribbon Group

The registry key *Colligo/Contributor/Branding/RibbonGroup* displays in the following locations:



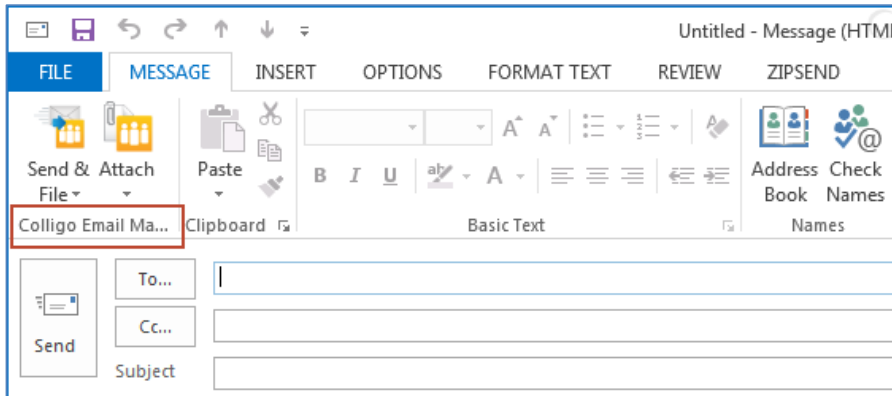
Ribbon Tab

The registry key *Colligo/Contributor/Branding/RibbonTab* displays in the following location:



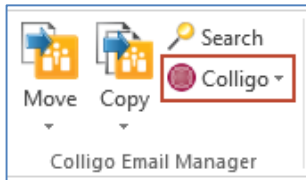
Ribbon Help Group

The registry key *Colligo/Contributor/Branding/RibbonHelpGroup* displays in the following location:



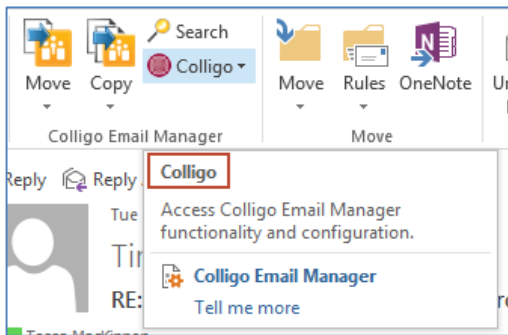
Company Drop Down

The registry key *Colligo/Contributor/Branding/CompanyDropDown* displays in the following location:



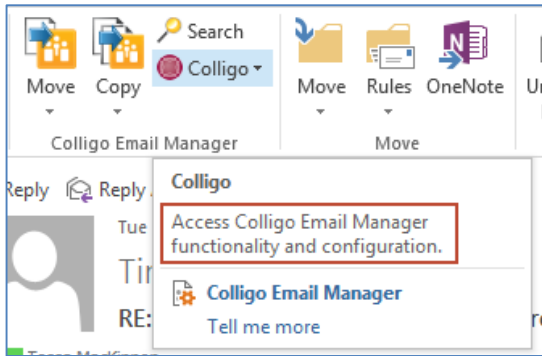
Drop Down Screentip

The registry key *Colligo/Contributor/Branding/DropDownScreentip* displays in the following location:



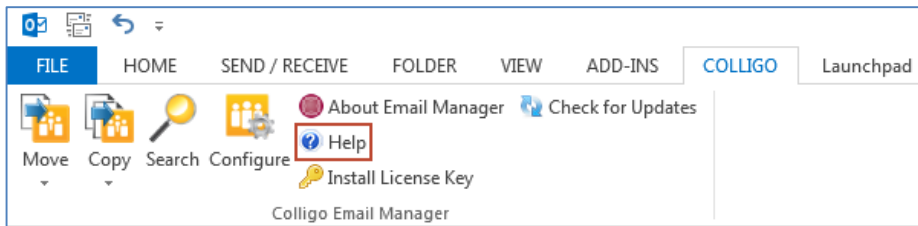
DropDownSupertip

The registry key *Colligo/Contributor/Branding/DropDownSupertip* displays in the following location:



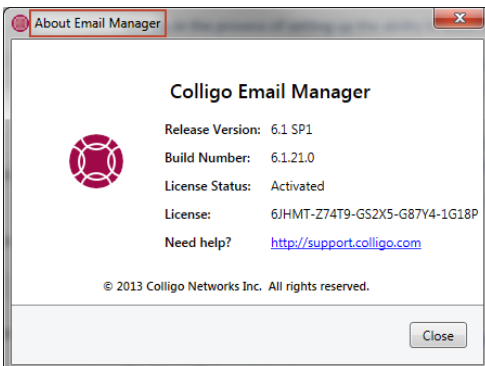
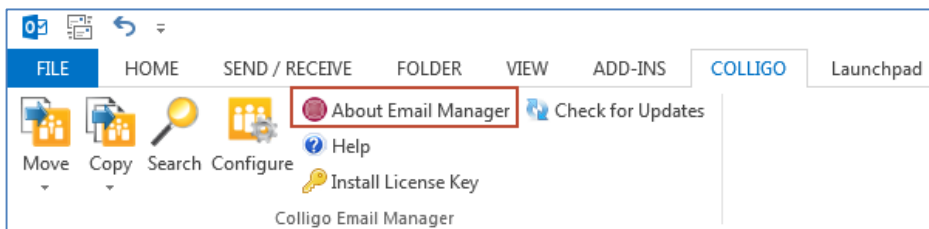
Help

The registry key *Colligo/Contributor/Branding/Help* displays in the following location:



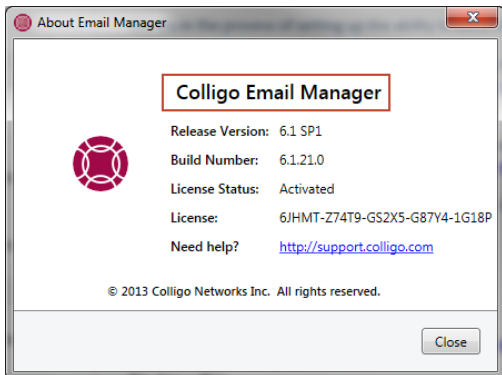
About

The registry key *Colligo/Contributor/Branding/About* displays in the following locations:



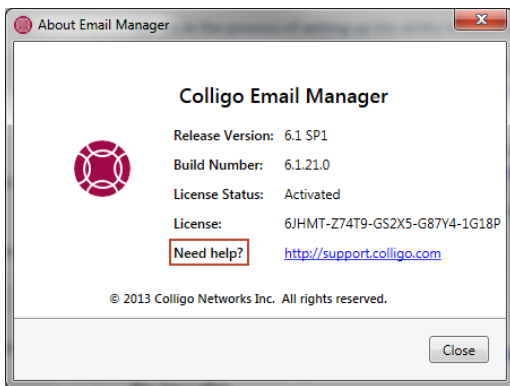
Product

The registry key *Colligo/Contributor/Branding/Product* displays in the following location:



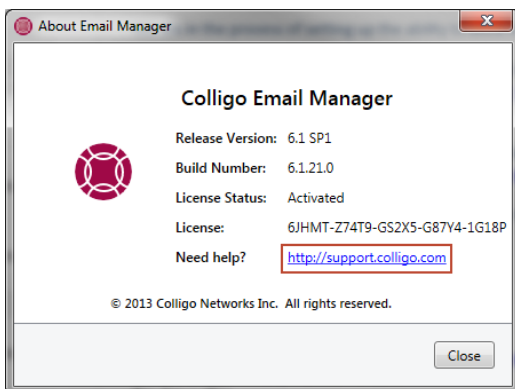
Need Help

The registry key *Colligo/Contributor/Branding/NeedHelp* displays in the following location:



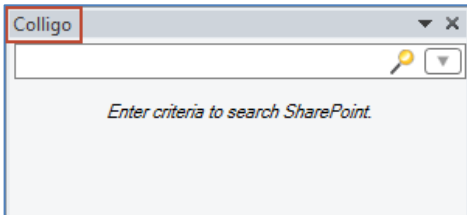
Product Support URL

The registry key *Colligo/Contributor/Branding/ProductSupportUrl* displays in the following location:



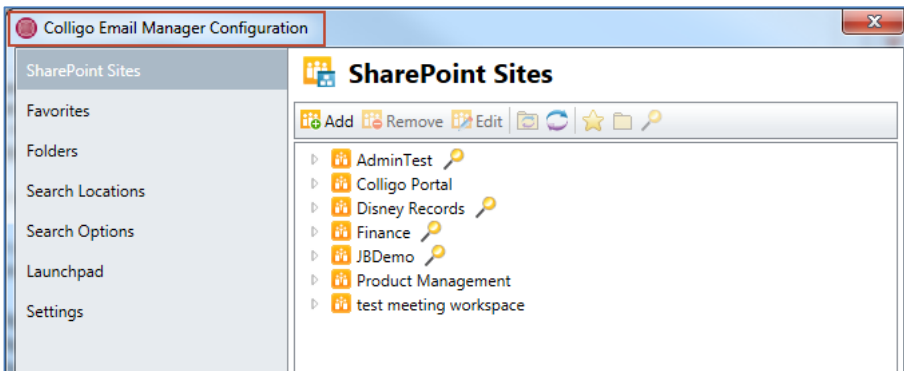
Search

The registry key *Colligo/Contributor/Branding/Search* displays in the following location:



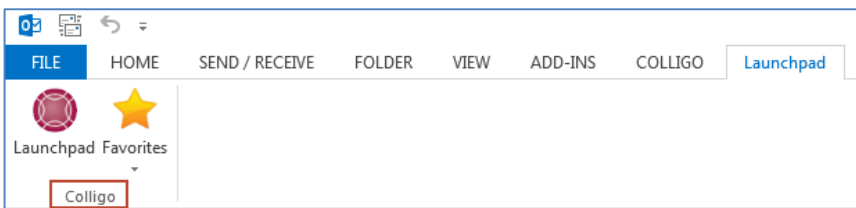
Options Dialog

The registry key *Colligo/Contributor/Branding/OptionsDialog* displays in the following location:



Launchpad Ribbon

The registry key *Colligo/Contributor/Branding/LaunchpadConfigGroup* displays in the following location:



System Tray App Name

The registry key *Colligo/Contributor/Branding/SystemTrayAppName* displays in the following locations:

