

Contributor Install Walk-through

This document walks through the install steps to install Colligo Contributor for SharePoint (all SKUs).

EXE Installer

The walk-through install is an interactive install using the .exe installer available here:

- <http://www.colligo.com/go/contriblatest/ContributorSetup.exe>

The exe installer is an interactive-only installer which attempts to download and install any missing prerequisites from <http://www.colligo.com/Prerequisites>.

Prerequisites are listed on the Contributor support site here:

- <http://support.colligo.com/Lists/Knowledge%20Base/DispForm.aspx?ID=60>

MSI Installer

An msi installer is available for download here:

- <http://www.colligo.com/go/contriblatest/ColligoContributor.msi>

The msi installer assumes prerequisite are installed. It supports silent or push-based installs using most enterprise deployment solutions (eg MS-SCCM). The msi may be customized with many configuration settings, listed here:

- <http://support.colligo.com/Lists/Contributor%20Settings/>

More Information

More information is available in the Contributor Admin Guide:

<http://support.colligo.com/Documents/Contributor/Admin%20Guide/Colligo%20Contributor%20v4.2%20Administrator%27s%20Guide.pdf>

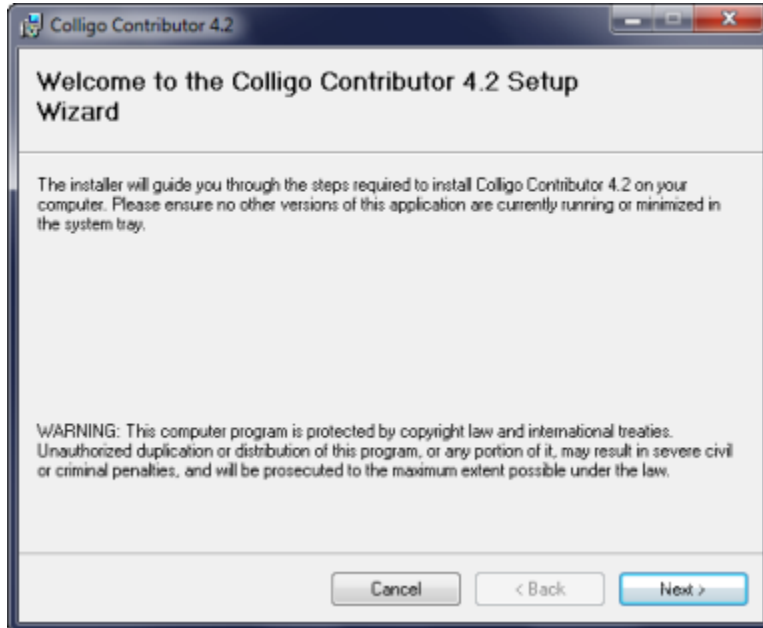
Contents

Contributor Install Walk-through.....	1
EXE Installer	1
MSI Installer	1
More Information	1
Installation Walk-through	3
Step 1: Run the installer.....	3
Step 2: Accept the License Agreement	3
Step 3: Enter your license key.....	4
Step 4: Select components to install.....	5
Contributor Pro:	5
Contributor Add-in:.....	5
Contributor Uploader.....	6
Contributor FileManager	6
Contributor Client (Viewer).....	7
Step 5: Choose your installation path.....	8
Step 6: Install.....	8
Step 7: Progress	9
Step 8: Complete.....	9
Post-Install steps	10
Step 1: Activate	10
Step2: Activation Complete	10

Installation Walk-through

Step 1: Run the installer

The installer runs, click 'Next' to continue the install.

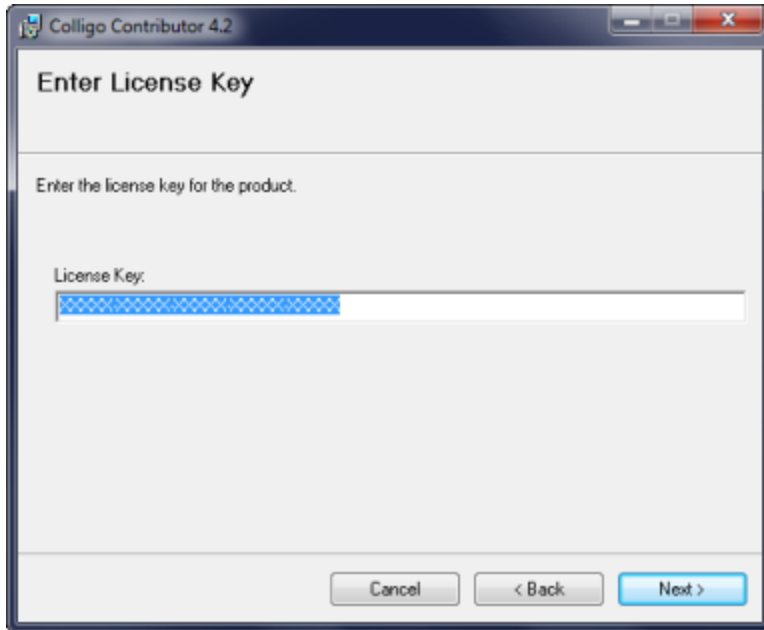


Step 2: Accept the License Agreement



Step 3: Enter your license key

The key consists 5-blocks of 5-charaters. Ensure there are no white-spaces after the license key.

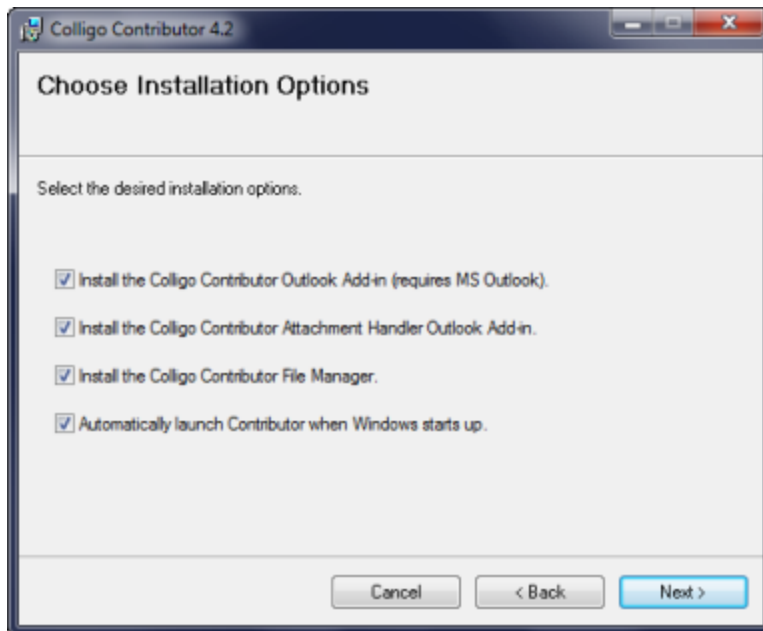


The image shows a screenshot of a software dialog box titled "Colligo Contributor 4.2" with the subtitle "Enter License Key". The dialog box contains the following elements:

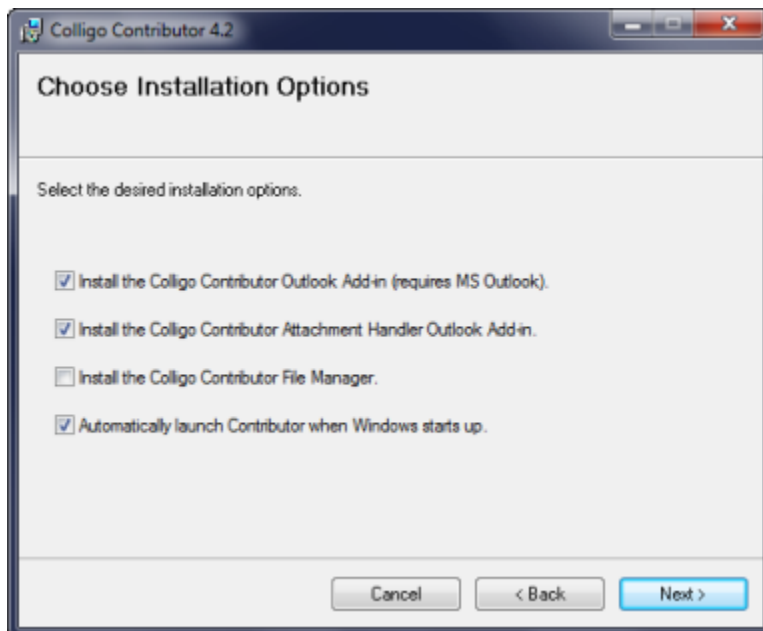
- A title bar with the text "Colligo Contributor 4.2" and standard window control buttons (minimize, maximize, close).
- A main heading "Enter License Key".
- A sub-heading "Enter the license key for the product."
- A label "License Key:" followed by a text input field. The input field contains a blue checkered pattern, indicating that the license key is being entered.
- A footer area containing three buttons: "Cancel", "< Back", and "Next >".

Step 4: Select components to install

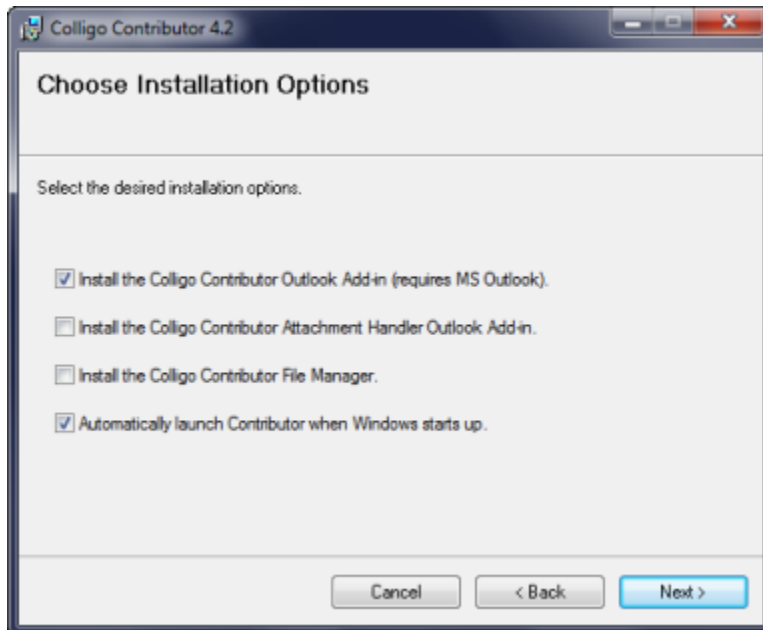
Contributor Pro:



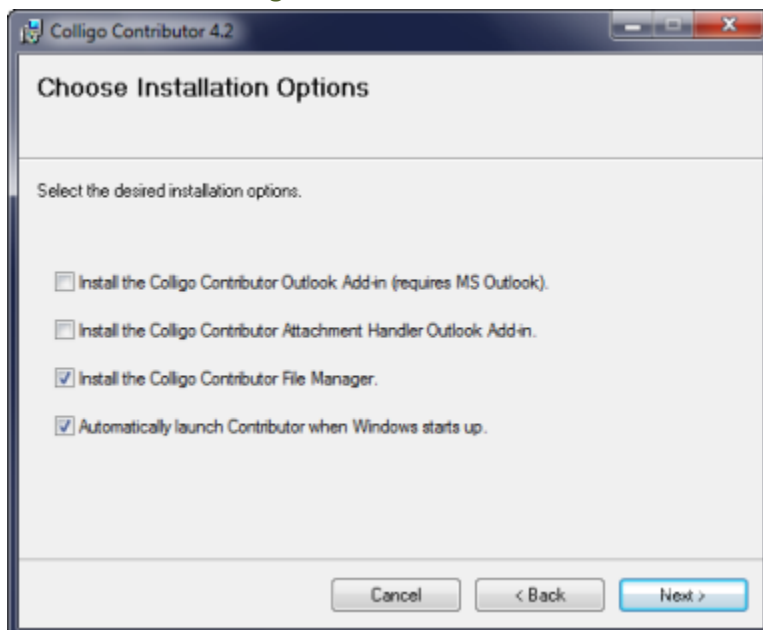
Contributor Add-in:



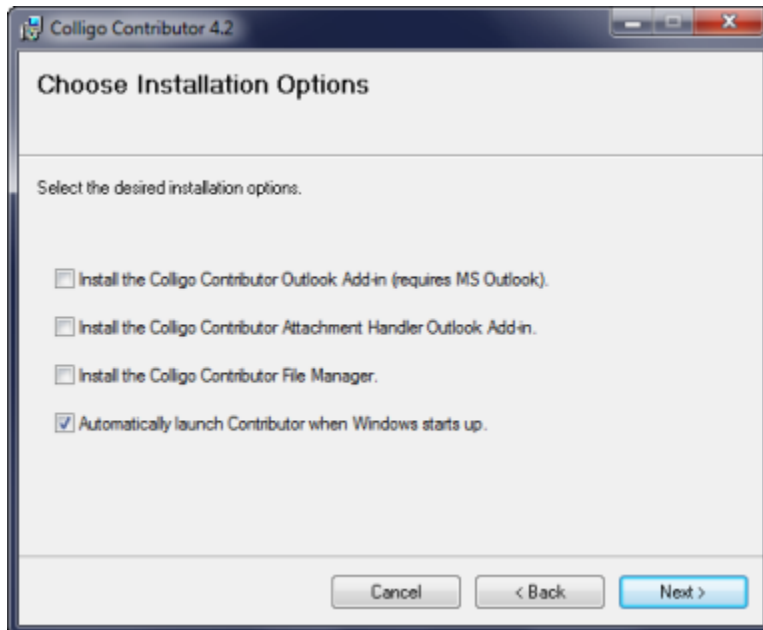
Contributor Uploader



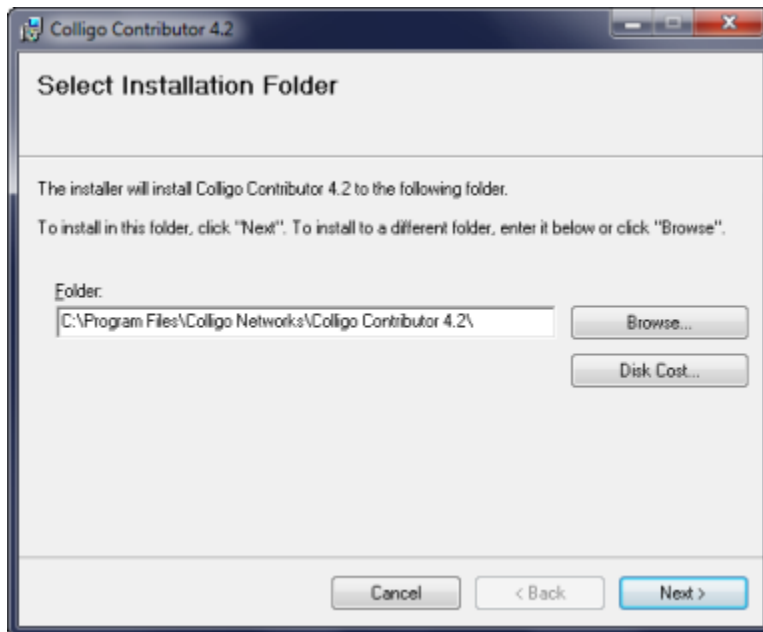
Contributor FileManager



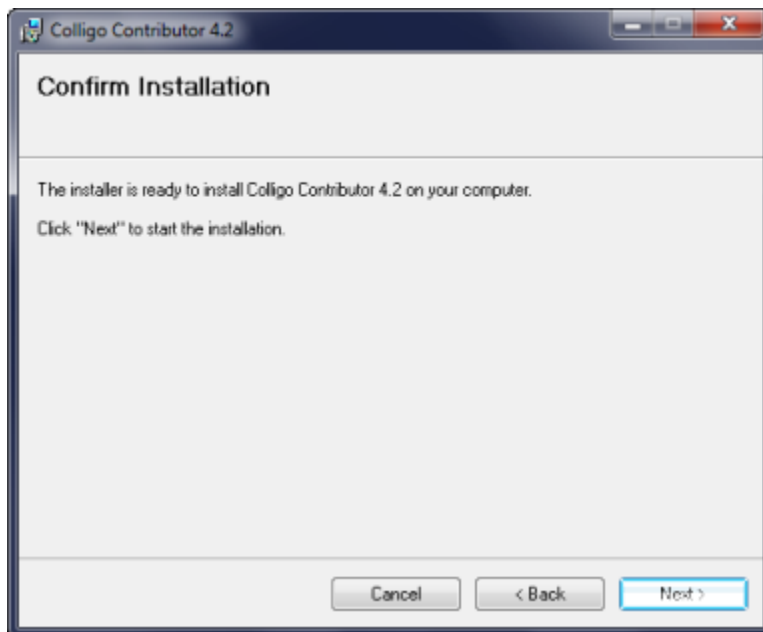
Contributor Client (Viewer)



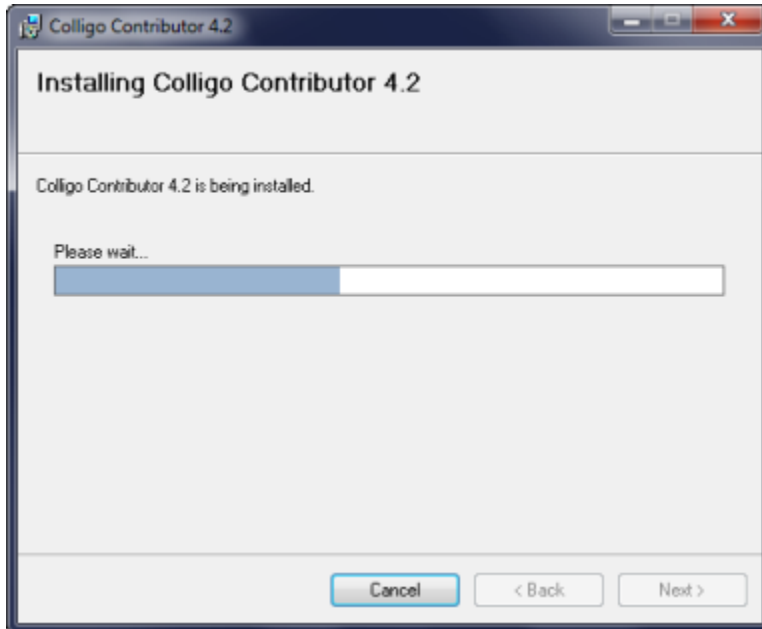
Step 5: Choose your installation path



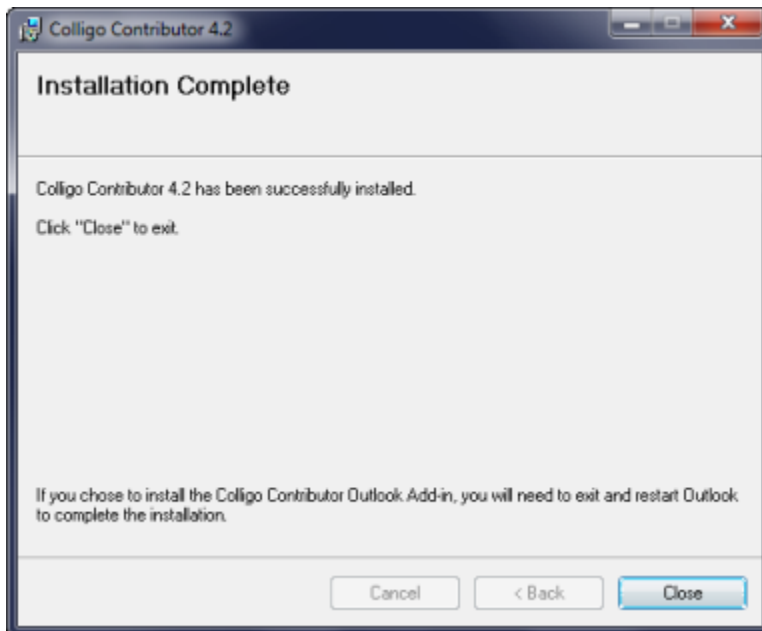
Step 6: Install



Step 7: Progress



Step 8: Complete



Post-Install steps

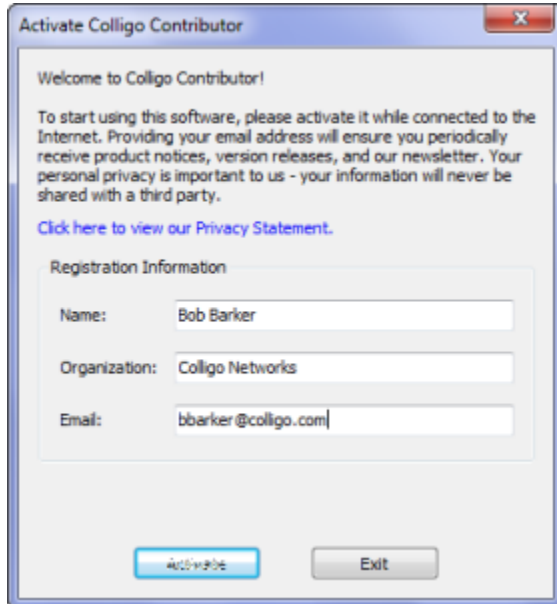
Start the Contributor product from Windows -> Start -> All Programs -> Colligo Contributor -> Colligo Contributor 4.2.

Activation requirements are dependent on the License key. This step *may* not be required.

Step 1: Activate

Enter your name, organization, and email.

Contributor will activate the product using http to colligo.com



Step2: Activation Complete

Contributor will start up.

