



USER GUIDE

Introduction

This User Guide is designed to serve as brief overviews to help you get started using the Contributor Registry Configuration Editor. There is also information on the product features available under the Help option in the Editor toolbar.

We hope you enjoy using the product, and please don't hesitate to send us questions or provide feedback at support@colligo.com. Thank You.



Quick Start Contents

INTRODUCTION	1
COMPATIBILITY AND PRE-REQUISITES FOR COLLIGO CONTRIBUTOR	3
SYSTEMS SUPPORTED.....	3
APPLICATION PREREQUISITES.....	3
COMPATIBLE PRODUCTS.....	3
REGISTRY EDITING CONSIDERATIONS	4
PROFILES	4
REGISTRY FILES.....	4
REGISTRY HIVE	4
HKEY_LOCAL_MACHINE.....	4
HKEY_CURRENT_USER	4
MAIN INTERFACE	5
Profile View	5
1. Toolbar	5
2. Registry Key Tree.....	5
3. Registry Key Information.....	5
4. Edit Control.....	6
5. Read or Write Registry Control.....	6
6. Variation from Default Notification	6
7. Current Registry Setting	6
Registry File View.....	6
1. Toolbar	6
2. Registry Key Tree.....	6
3. Registry Key Information.....	6
4. Edit Key.....	6
READING YOUR CURRENT SETTINGS USING A PROFILE.....	6
UPDATING YOUR SETTINGS USING A PROFILE	7
CREATING A REGISTRY FILE.....	8
ASSOCIATE A REGISTRY FILE WITH A PROFILE	8
CREATING A REGISTER OR UNREGISTER FILE WITH A REGISTRY FILE	9
EDIT A PROFILE KEY	9
EDIT A REGISTRY FILE KEY (FOLDER).....	9
CREATE A REGISTRY FILE KEY (FOLDER).....	9
EDIT A REGISTRY FILE ITEM	10
CREATE A REGISTRY FILE ITEM.....	10



Compatibility and pre-requisites for Colligo Contributor

Systems Supported

- Microsoft® Windows® 7 Home Premium; Professional or Ultimate.
- Microsoft® Windows® Vista Business; Enterprise or Ultimate.
- Microsoft® Windows® XP Home or Professional

Application Prerequisites

- **.NET Framework 2.0**
- Microsoft Visual Studio 2005 Tools for Office Second Edition (VSTO 2005 SE) Runtime

Compatible Products

The Configuration Editor is compatible with Contributor Release 4.1 and higher. It can be used to edit and manage the configuration for early versions of Contributor but not all of the registry settings in would be applicable.



Registry Editing Considerations

The Contributor Registry Configuration Editor enables the user to view, edit and set registry keys which affect the operation and functioning of Contributor. As with any editor which edits or changes the registry user should be aware that changing registry values may have unexpected side effects. The Contributor Editor is designed to assist in minimizing the risk of changing settings by providing advanced information and controls to create valid registry key values and sets of registry keys.

Profiles

The Configuration Editor uses Profiles to provide a view of a group of Contributor registry settings. A profile is a set or sub-set of registry keys which have been group and identified to be managed as a set. The default installation has three included Profiles.

1. Default – the basic set of user configuration settings which are also available via the normal Contributor User interfaces
2. User – a set of settings which a normal or power user might wish to examine or modify.
3. Admin – the complete set of registry keys and settings available and used by Contributor products.

Profiles are XML based files which contain the relevant keys, descriptions, settings, defaults and values. Profiles can be considered templates as you cannot change or alter the content of a Profile within the Editor.

Note:

New profile templates can be created by editing the XML file using a standard XML editor and removing the keys which you do not wish to have in the template, however, no changes other than delete should be made.

Registry Files

Registry file are sets of registry keys which can be applied to a PC registry. These file scan be used to change an existing registry and can be deployed to a target system and then execute or installed to synchronize the changes. This if further described in the Microsoft Article: <http://support.microsoft.com/kb/310516/>.

The Contributor Editor supports creation, reading and editing registry files which can then be deployed and installed on target machines using normal administration techniques.

Registry files created by the Editor are initially constructed using the Contributor keys and do not contain complete copies of the PC registry. Additional keys can be added on modified once the registry file is created. Registry files can also be added to a Profile to create both a template of keys and a deployable file which sets those keys

Registry Hive

PC Registries have an in-built hierarchy which is supported by the Contributor editor. Keys which are set in the higher levels cannot be changed or altered by a setting in a lower level i.e. the top most level takes precedence. Levels can be secured fro alteration by using standard Microsoft Windows security mechanisms. An Administrator may use this to restrict the settings a user may make on a machine.

HKEY_LOCAL_MACHINE

This stores settings relevant to the local machine and is shared amongst any users who login into this machine. Registry keys which appear in this level take precedence over values set in the Current user level.

HKEY_CURRENT_USER

This stores settings relevant to the currently logged in user and is specific to that user. Contributor uses this level for settings applicable to a user. These settings have a corresponding setting in the Local Machine level which may over ride the Current user setting. An Administrator may secure the Local Machine level and so any entries at this level may not have the expected effect.

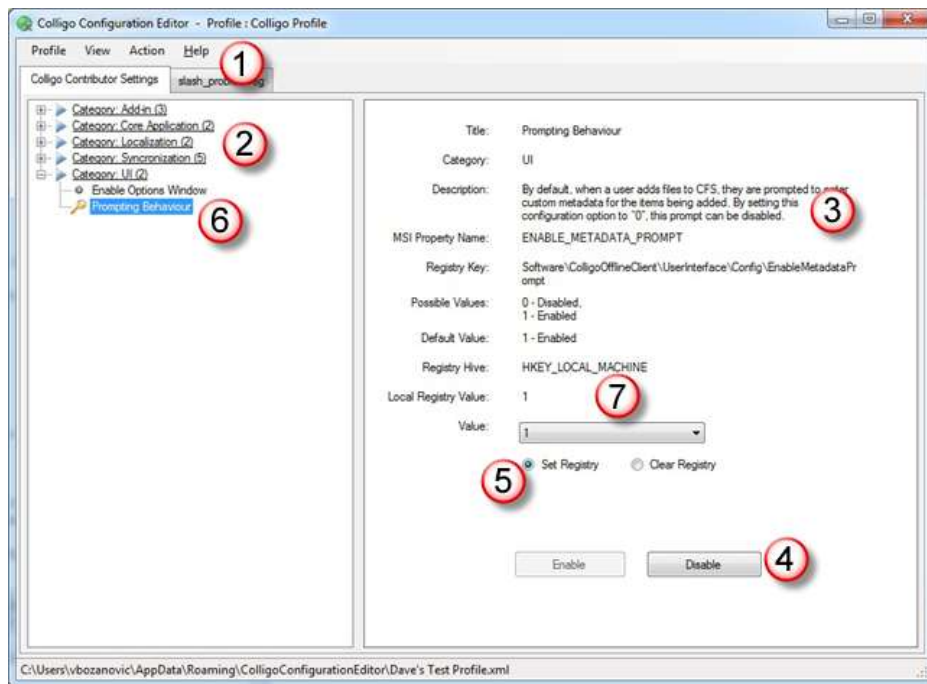


Main Interface

The Main Interface initially opens and displays the default Profile. You can then select any other available Profiles for display. The Interface is context sensitive and the operations of each menu will change depending on if the display is set to operate on the Registry (using a Profile) or a Registry File.

Profile View

The Profile view contains a left hand navigation tree which follows the layout and hierarchy of the Contributor Registry settings. If a setting is supported at both the Local machine and the Current User levels this can be selected on a per key basis in the detailed key area.



1. Toolbar

The Toolbar contains commands relevant to reading, setting and updating the active Registry of the machine on which the Editor is installed. Changes are made dynamically and immediately to the Registry but only to Contributor settings. You should always take a backup of your registry before attempting any registry settings see

For XP <http://support.microsoft.com/kb/322756/>

For Vista <http://windows.microsoft.com/en-US/windows-vista/Back-up-the-registry>

For Windows 7 <http://windows.microsoft.com/en-us/windows7/Back-up-the-registry>

2. Registry Key Tree

The Registry Key tree is used to navigate and display the Registry key identified in the applicable Profile. The layout and structure of the key tree follows the Contributor key layout which is not a single location but is distributed in the relevant portions of the Registry. For convenience the Editor presents the entire tree in a single unified view.

3. Registry Key Information

The detailed area provides information regarding the selected key. This includes a description, registry key, corresponding MSI installer key, possible values and the default installation from Colligo value. Note the default installation value may not be the same as the installation



4. Edit Control

To prevent accidental editing each key must be individually enabled for editing each time the editor is used. When a key is enabled for editing the key tree icon changes to green.

5. Read or Write Registry Control

This controls if a key is to be added to the registry or its value cleared in the registry.

6. Variation from Default Notification

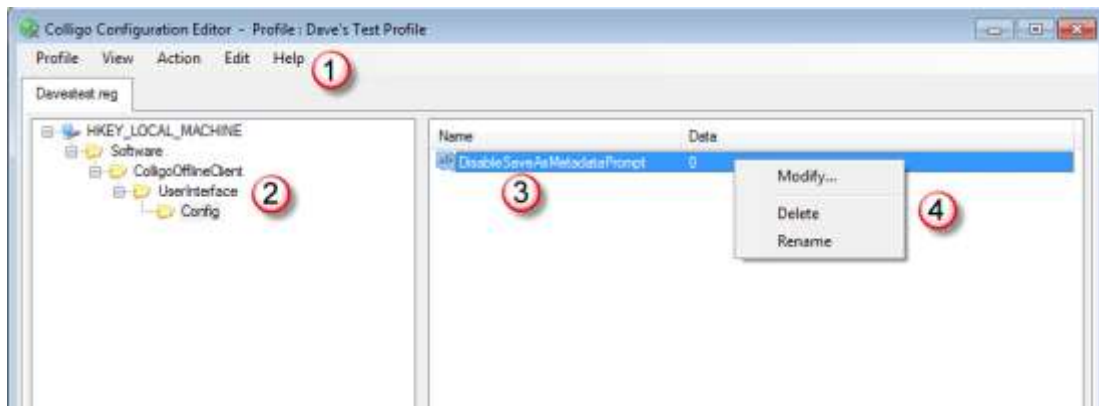
All those settings which have a value (including default values) can be read into the Profile view and set to Enabled.

7. Current Registry Setting

If the enabled key values have been read from the local registry they vary from the default Colligo installation value their current value is displayed here.

Registry File View

The Registry File view contains a left hand navigation tree which follows the layout and hierarchy of the computer registry settings. The right hand area displays the individual keys.



1. Toolbar

The Toolbar contains commands relevant to reading, setting and updating the registry file. Changes are made only to the registry file and are not applied to the active registry on the local machine.

2. Registry Key Tree

The Registry Key tree is used to navigate and display the Registry key identified in the registry file. The layout and structure of the key tree follows the Windows registry structure.

3. Registry Key Information

The detailed area provides information regarding the selected key. This includes the key name and value. Contributor only uses String key types.

4. Edit Key

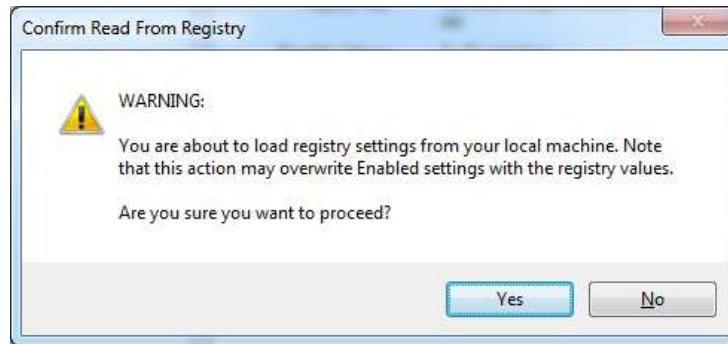
Right clicking on the key brings up a Edit menu to allow the value to be modified, the key to be deleted or renamed. Right clicking away from any key brings up a New item menu to add a new key. There is also an Edit command in the toolbar which allows a new key folder to be specified and added to the registry file. This folder can only be located in visible areas of the key tree.

Reading your current settings using a Profile



To read your current registry settings using a Profile:

- Enter the Profile View
- Use the Action toolbar menu and select Read from Registry
- Select Yes to confirm

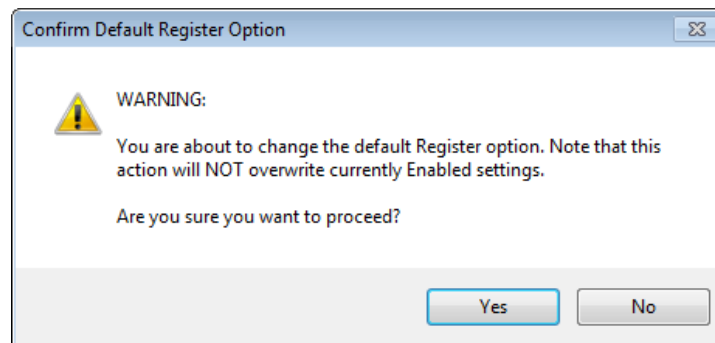


- This will read any registry settings from the Registry. All those settings which have a value (including default values) will be read into the Profile view and set to Enabled.

Setting the session default Profile behavior

The default behavior is to use a Profile to set registry values. The Profile can also be used to clear registry settings. To set all of the Profile settings to default Clear Registry (for just this session)

- Enter the Profile View
- Enable the keys that you want leave unchanged
- Use the Action toolbar menu and select Set Default
- Select Option – Set Registry or Option – Clear Registry



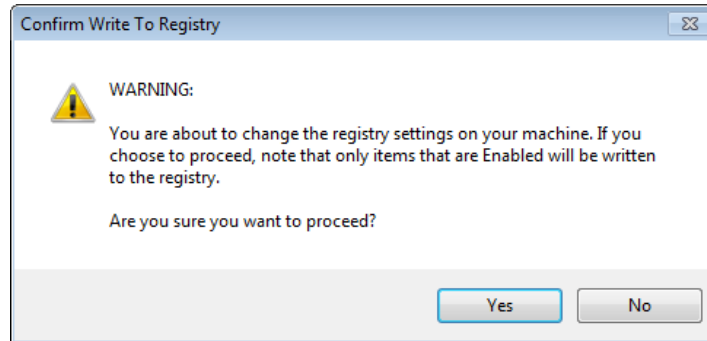
- Select Yes to proceed
- Only those values not currently enabled for editing will be changed.

Updating your settings using a Profile



To write your Profile settings to your registry:

- Enter the Profile View
- Enable the keys that you want to write
- Set the values for each key
- Use the Action toolbar menu and select Write to Registry
- Select Yes to confirm

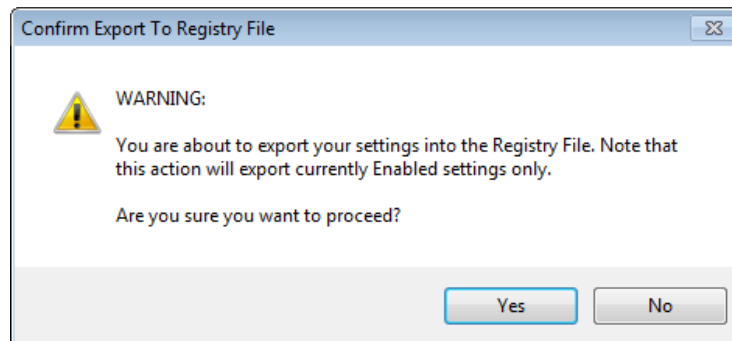


- This will write any registry setting which you have Enabled in your Profile to the same in the registry.

Creating a Registry File

To create a registry file from a Profile:

- Enter the Profile View
- Enable the keys that you want to write
- Set the values for each key
- Use the Action toolbar menu and select Export To
- Select Yes to confirm



- Use the Explorer window to save the file.

Associate a Registry File with a Profile



To associate a registry file with a Profile:

- Enter the Profile View
- Use the Profile toolbar menu and select Add Item
- Select Yes to confirm
- Use the Explorer window to locate the required Registry file.

Creating a Register or UnRegister File with a Registry File

You can create copies of Registry file which either modify the registry settings (reg) or which remove the registry values (unreg). To create a copy of a registry file:

- Enter the Registry File View
- Use the Action toolbar menu and select Export To
- Select Reg or Unreg file
- Use the Explorer window to save the file.

Edit a Profile key

You can edit the values of keys which are in a Profile:

- Enter the Profile View
- Navigate to the required item
- Select the Item to display it in the item pane
- Select Enable to activate editing
- Edit the Registry level and registry Values as required
- Select to Set the registry value or to Clear the registry value

Edit a Registry File Key (Folder)

You can edit the Key (Folders) in a Registry File:

- Enter the Registry File View
- Navigate to the required item

- Right Click on the key to bring up the edit menu
- Select Rename or Delete as required.

- Or

- Use the Edit toolbar menu
- Select Rename or Delete as required.

Create a Registry File Key (Folder)

You can create Keys (Folders) in a Registry File:

- Enter the Registry File View
- Navigate to the required parent location

- Right Click on the key to bring up the edit menu
- Select New Key.

- Or



- Use the Edit toolbar menu
- Select New and then Key.

Edit a Registry File Item

You can edit the values of registry items which are in a Registry File

- Enter the Registry File View
- Navigate to the required key which contains the item to display it in the item pane
- Right Click on the key to bring up the edit menu
- Select Modify, Rename or Delete as required.
- Or
- Use the Edit toolbar menu.
- Select New, Modify, Rename or Delete as required

Create a Registry File Item

You can create registry items (values) in a Registry File

- Enter the Registry File View
- Navigate to the required key which contains the item to display it in the item pane
- Right Click on any blank space in the item pane to bring up the edit menu
- Select New Value.
- Or
- Use the Edit toolbar menu.
- Select New and then Value



Contributor Registry Settings

A detailed list of settings is maintained on the Colligo website at [Contributor Settings](#)

Contributor Core Settings	
License Key	The license key can be embedded in the installer
Silent Activation	Contributor may be configured to silently activate the product in startup allowing enterprises to ensure the product is activated with minimal user interaction.
Storage Root	Location of Contributor's cache
Storage Encryption	Contributor can be configured to store its cache in encrypted form (using Windows Encrypting File system).
Web Proxy	You can configure Contributor to use: no proxy; the IE default proxy; or another explicitly-defined proxy.
Use Synchronization Locking	A network database lock feature has been added that permits network users in Terminal Services environments to be logged-into CFS in multiple locations. This facilitates the usage of a common database file stored on the network by allowing all of the clients to negotiate which one has current control. This functionality can be found in the main toolbar of both the Contributor Client and the Outlook AddIn.
Disable SaveAs Prompting	Disable Prompt for Metadata using the FileManager when using the SaveAs function in an application.
User-Interface Settings	
Language	Override Contributors language setting (English, French, German, or Spanish (Castilian) or Spanish (Mexican)).
Metadata Prompt	When content is added to Contributor, users are prompted to enter metadata. This can be disabled.
Disable Options Window	IT can completely disable user access to the options panel.
Custom Metadata Editor	Contributor supports 3 rd -party developed metadata editors. (For details contact sales@colligo.com)
Use Windows appearance	Contributor can be configured to integrate with the current appearance. Default appearance in similar to SharePoint.
Synchronization Settings	
Start Contributor on Windows startup	A shortcut to Contributor is placed in the user's "Start -> Programs -> Startup" folder.
Sync-On-Startup	Contributor will synchronize its cache when it starts up This may be disabled, e.g. in a large deployment to avoid a start-of-day peak in network traffic.
Sync-On-Change	Content is synchronized when it is changed.
Sync-On-Navigate	Contributor synchronizes the contents of a list when it is viewed
Background Sync	Can be disabled altogether.
Background Sync Interval	Default value is 30 minutes; minimum 15; maximum 1440 (1 day).
Download Lookup Lists	Content may use Site Columns to lookup data from another web within the Site Collection.
Create Documents in Single Transaction	Use a single transaction put to upload new content and set metadata. Default behaviour uploads content then separately sets metadata. The two-step approach may cause issues with event handlers, workflow or versioning. This setting affects only the initial upload of content, not content changes.



Office Integration Settings	
Require Framework 3.0	The .Net Framework 3.0 runtime is required to integrate with the Office 2007 OpenXML file-format (for metadata mapping). The installer can be configured to *not* require the 3.0 Framework. This will silently stop integration with the OpenXML documents.
Outlook Add-In Settings	
Enable Outlook Add-In	The Installer can be configured to not install the Outlook Add-in (install-time setting)
Enable Outlook Lists	By default Contributor does not allow connecting SharePoint lists to Outlook. This feature is disabled due to a bug in Outlook 2007. Customers using Outlook 2003 can choose to enable support for SharePoint lists.
Enable Outlook Timer	When a large number of items are added to an Outlook folder the ItemAdd event does not fire. This is a well-documented Outlook issue. To resolve this issue Contributor can be configured to poll the Contributor folders. Enabling this option will cause a small CPU spike every 10 seconds.
Enable stssync	Office 2007 integrates with SharePoint 2007 sites to offer a “Connect to Outlook” option in the Actions menu. This option overrides the Outlook 2007 handler to connect to Contributor. NOTE: Office Updates may override the protocol handler. If the stssync handler is enabled we recommend testing compatibility before deploying updates.
Email Drag-and-Drop filename	Items added to a SharePoint document library must have a valid filename. When an email is drag-and-dropped in Outlook, Contributor must generate a filename. The format of this filename can be customized.
Force Send and File	The setting forces the use of the Outlook Send and File function and prevents the use of Outlook Send function.
Disable viewing of Outlook Attachment rules (new)	Removes access to the Contributor Attachment Manager Rules configuration dialog which is used to view or change the rules. This prevents a user from changing the value of the limits from within the user interface.
Total attachment size limit (new)	The Contributor Attachment Manager Rules prevent a user sending emails with a total attachment greater than a configurable limit. Default limit is 10MB a value well above most email systems.
Warning attachment size limit (new)	The Contributor Attachment Manager Rules warn a user sending emails with a total attachment greater than a configurable limit. Default limit is 10MB a value well above most email systems.
Outlook folder-name	It is possible to change the name and home-page of the Colligo for SharePoint folder in Outlook.
Outlook folder-url	