

Colligo Contributor Configuration Editor 4.4 SP2

User Guide



Contents

Introduction2

Compatibility and pre-requisites for Colligo Contributor2

 Systems Supported 2

 Application Prerequisites 2

 Compatible Products..... 2

Registry Editing Considerations.....3

 Profiles 3

 Registry Files 3

 Registry Hive 3

 HKEY_LOCAL_MACHINE 3

 HKEY_CURRENT_USER 4

 Main Interface..... 4

 Profile View 4

 Registry File View 5

 Reading Your Current Settings Using a Profile..... 6

 Setting the Session Default Profile Behavior 6

 Updating Settings Using a Profile..... 7

 Creating a Registry File..... 7

 Associate a Registry File with a Profile 8

 Creating a Register or UnRegister File with a Registry File 8

 Editing a Profile key 8

 Editing a Registry File Key (Folder)..... 8

 Create a Registry File Key (Folder) 8

 Edit a Registry File Item 9

 Create a Registry File Item 9

 Contributor Registry Settings..... 10

Introduction

This User Guide is designed to serve as brief overview to help you get started using the Contributor Registry Configuration Editor. There is also information on the product features available under the Help option in the Editor toolbar.

Send questions or provide feedback to support@colligo.com.

Compatibility and pre-requisites for Colligo Contributor

Systems Supported

- Microsoft Windows 8
- Microsoft Windows 7 Home Premium; Professional or Ultimate
- Microsoft Windows Vista Business; Enterprise or Ultimate
- Microsoft Windows XP Home or Professional

Application Prerequisites

- Microsoft.NET framework 3.5 Runtime
- Microsoft.NET framework 2.0 Runtime

Compatible Products

The Configuration Editor is compatible with Contributor Release 4.1 and higher. It can be used to edit and manage the configuration for early versions of Contributor but not all of the registry settings in would be applicable.

Registry Editing Considerations

The Contributor Registry Configuration Editor enables the user to view, edit, and set registry keys that affect the operation and functioning of Contributor. As with any editor that edits or changes the registry, users should be aware that changing registry values may have unexpected side effects. The Contributor Editor is designed to assist in minimizing the risk of changing settings by providing advanced information and controls to create valid registry key values and sets of registry keys.

Profiles

The Configuration Editor uses Profiles to provide a view of a group of Contributor registry settings. A profile is a set or sub-set of registry keys that have been grouped and identified to be managed as a set. The default installation has three included Profiles:

1. **Default:** the basic set of user configuration settings that are also available via the normal Contributor User interfaces
2. **User:** a set of settings that a normal or power user might wish to examine or modify.
3. **Admin:** the complete set of registry keys and settings available and used by Contributor products

Profiles are XML-based files that contain the relevant keys, descriptions, settings, defaults, and values. Profiles can be considered templates as you cannot change or alter the content of a Profile within the Editor.

NOTE: You can create new profile templates by editing the XML file using a standard XML editor and removing the keys that you do not wish to have in the template. However, no changes other than delete should be made.

Registry Files

Registry files are sets of registry keys that can be applied to a PC registry. These files can be used to change an existing registry and can be deployed to a target system and then executed or installed to synchronize the changes. This is further described in the Microsoft Article:

<http://support.microsoft.com/kb/310516/>.

The Contributor Editor supports creation, reading, and editing registry files that can then be deployed and installed on target machines using normal administration techniques.

Registry files created by the Editor are initially constructed using the Contributor keys and do not contain complete copies of the PC registry. Additional keys can be added or modified once the registry file is created. Registry files can also be added to a Profile to create both a template of keys and a deployable file that sets those keys

Registry Hive

PC Registries have a built-in hierarchy that is supported by the Contributor editor. Keys that are set in the higher levels cannot be changed or altered by a setting in a lower level; i.e. the top-most level takes precedence. Levels can be secured from alteration by using standard Microsoft Windows security mechanisms. An Administrator may use this to restrict the settings a user may make on a machine.

HKEY_LOCAL_MACHINE

This stores settings relevant to the local machine and is shared amongst any users who log in to this machine. Registry keys that appear in this level take precedence over values set in the Current user level.

HKEY_CURRENT_USER

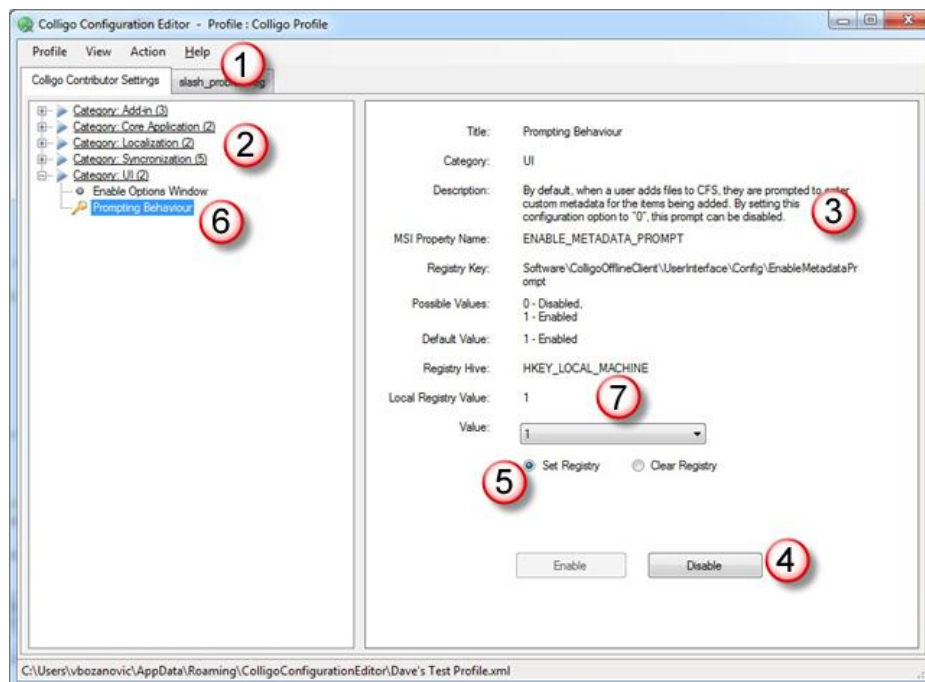
This stores settings relevant to the currently logged in user and is specific to that user. Contributor uses this level for settings applicable to a user. These settings have a corresponding setting in the Local Machine level which may override the Current user setting. An Administrator may secure the Local Machine level and so any entries at this level may not have the expected effect.

Main Interface

The Main Interface displays the default Profile. You can then select any other available Profiles for display. The Interface is context sensitive and the operations of each menu change depending on if the display is set to operate on the Registry (using a Profile) or a Registry File.

Profile View

The Profile view contains a left-hand navigation tree that follows the layout and hierarchy of the Contributor Registry settings. If a setting is supported at both the Local machine and the Current User level, this can be selected on a per key basis in the detailed key area.



1. Toolbar

The Toolbar contains commands relevant to reading, setting, and updating the active Registry of the machine on which the Editor is installed. Changes are made dynamically and immediately to the Registry but only to Contributor settings. You should always take a backup of your registry before attempting any registry settings.

For XP, see: <http://support.microsoft.com/kb/322756/>

For Vista, see: <http://windows.microsoft.com/en-US/windows-vista/Back-up-the-registry>

For Windows 7, see: <http://windows.microsoft.com/en-us/windows7/Back-up-the-registry>

2. Registry Key Tree

The Registry Key tree is used to navigate and display the Registry key identified in the applicable Profile. The layout and structure of the key tree follows the Contributor key layout, which is not a single location

but is distributed in the relevant portions of the Registry. For convenience, the Editor presents the entire tree in a single unified view.

3. Registry Key Information

The detailed area provides information regarding the selected key. This includes a description, registry key, corresponding MSI installer key, possible values, and the default installation from Colligo value.

NOTE: the default installation value may not be the same as the installation.

4. Edit Control

To prevent accidental editing, each key must be individually enabled for editing each time the editor is used. When a key is enabled for editing, the key tree icon changes to green.

5. Read or Write Registry Control

This controls if a key is to be added to the registry or its value cleared in the registry.

6. Variation from Default Notification

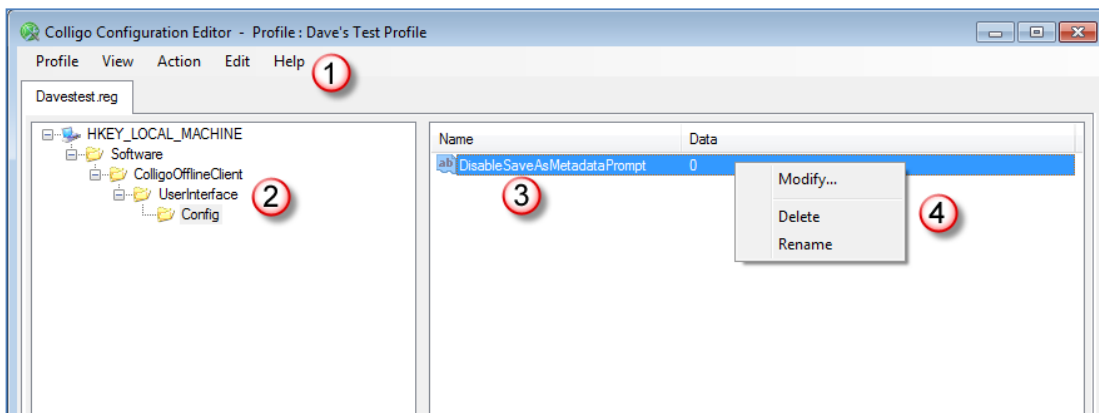
All settings that have a value (including default values) can be read into the Profile view and set to Enabled.

7. Current Registry Setting

If the enabled key values have been read from the local registry, they vary from the default Colligo installation value their current value is displayed here.

Registry File View

The Registry File view contains a left-hand navigation tree that follows the layout and hierarchy of the computer registry settings. The right-hand area displays the individual keys.



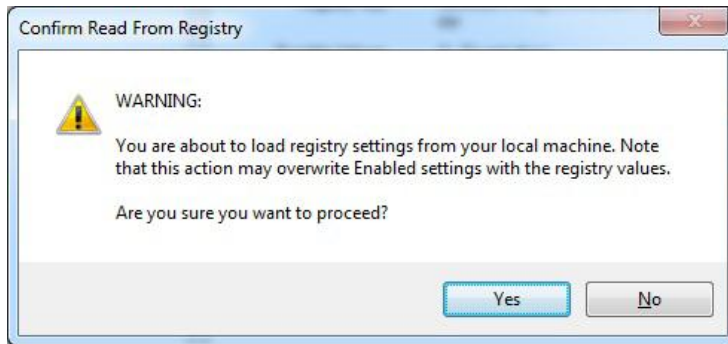
1. **Toolbar:** The Toolbar contains commands relevant to reading, setting, and updating the registry file. Changes are made only to the registry file and are not applied to the active registry on the local machine.
2. **Registry Key Tree:** The Registry Key tree is used to navigate and display the Registry key identified in the registry file. The layout and structure of the key tree follows the Windows registry structure.
3. **Registry Key Information:** The detailed area provides information regarding the selected key. This includes the key name and value. Contributor only uses String key types.
4. **Edit Key:** Right clicking on the key brings up an Edit menu to modify, delete, or rename a key. Right clicking away from any key brings up a New item menu to add a new key. There is also an Edit command in the toolbar that allows a new key folder to be specified and added to the registry file. This folder can only be located in visible areas of the key tree

Reading Your Current Settings Using a Profile

To read your current registry settings using a Profile:

1. Enter the **Profile View**.
2. Use the **Action** menu and select **Read from Registry**.

The **Confirm Read from Registry** dialog displays:



3. Select **Yes** to confirm.
This reads any registry settings from the Registry. All those settings that have a value (including default values) are read into the Profile view and set to Enabled.

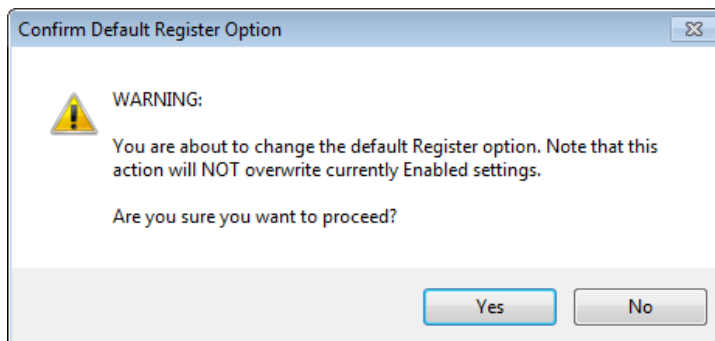
Setting the Session Default Profile Behavior

The default behavior is to use a Profile to set registry values. The Profile can also be used to clear registry settings.

To set all Profile settings to default Clear Registry (for just this session):

1. Enter the **Profile View**.
2. Enable the keys that you want leave unchanged.
3. From the **Action** menu, select **Set Default**.
4. Select **Option > Set Registry** or **Option > Clear Registry**.

The **Confirm Default Register Option** dialog displays:



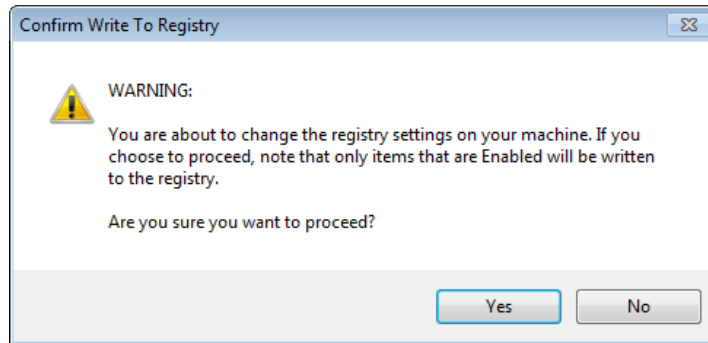
5. Select **Yes** to proceed
Only those values not currently enabled for editing are changed.

Updating Settings Using a Profile

To write your Profile settings to your registry:

1. Enter the **Profile View**.
2. Enable the keys that you want to write.
3. Set the values for each key.
4. From the **Action** menu, select **Write to Registry**.

The **Confirm Write to Registry** dialog displays:

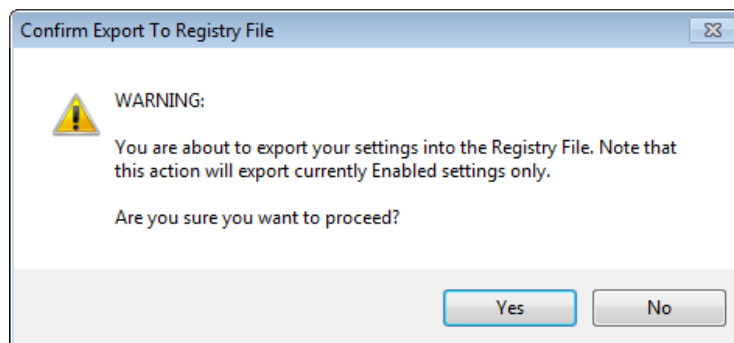


5. Select **Yes** to confirm.
This writes any registry setting that you have enabled in your Profile to the same in the registry.

Creating a Registry File

To create a registry file from a Profile:

1. Enter the **Profile View**.
2. Enable the keys that you want to write.
3. Set the values for each key.
4. From the **Action** menu, select **Export To**.
5. The **Confirm Export to Registry File** dialog displays:



6. Select **Yes** to confirm.
Use the Explorer window to save the file.

Associate a Registry File with a Profile

To associate a registry file with a Profile:

1. Enter the **Profile** View.
2. From the **Profile** menu, select **Add Item**.
3. Select **Yes** to confirm.
4. Use the Explorer window to locate the required Registry file.

Creating a Register or UnRegister File with a Registry File

You can create copies of Registry file that either modify the registry settings (reg) or that remove the registry values (unreg).

To create a copy of a registry file:

1. Enter the **Registry File** View.
2. From the **Action** menu, select **Export To**.
3. Select **Reg** or **Unreg** file.
4. Use the Explorer window to save the file.

Editing a Profile key

You can edit the values of keys that are in a Profile:

1. Enter the **Profile** View.
2. Navigate to the required item.
3. Select the item to display it in the item pane.
4. Select **Enable** to activate editing.
5. Edit the Registry level and registry Values as required.
6. Choose to either **Set** the registry value or to **Clear** the registry value.

Editing a Registry File Key (Folder)

You can edit the Key (Folders) in a Registry File:

1. Enter the **Registry File** View.
2. Navigate to the required item.
3. Right-click on the key to bring up the edit menu.
4. Select **Rename** or **Delete** as required.

Or

1. Use the **Edit** menu.
2. Select **Rename** or **Delete** as required.

Create a Registry File Key (Folder)

You can create Keys (Folders) in a Registry File:

1. Enter the **Registry File** View.
2. Navigate to the required parent location.
3. Right-click on the key to bring up the **Edit** menu.
4. Select **New Key**.

Or

1. Use the **Edit** menu.
2. Select **New > Key**.

Edit a Registry File Item

You can edit the values of registry items in a Registry File

1. Enter the **Registry File** View.
2. Navigate to the required key that contains the item to display it in the item pane.
3. Right-click on the key to bring up the **Edit** menu.
4. Select **Modify, Rename, or Delete** as required.

Or

1. Use the **Edit** menu.
2. Select **Modify, Rename or Delete** as required.

Create a Registry File Item

You can create registry items (values) in a Registry File:

1. Enter the **Registry File** View.
2. Navigate to the required key that contains the item to display it in the item pane.
3. Right-click on any blank space in the item pane to bring up the **Edit** menu.
4. Select **New Value**.

Or

1. Use the **Edit** menu.
2. Select **New > Value**.

Contributor Registry Settings

A detailed list of settings is maintained on the Colligo website at [Contributor Settings](#).

| Contributor Core Settings | |
|--------------------------------------|--|
| License Key | The license key can be embedded in the installer |
| Silent Activation | Contributor may be configured to silently activate the product in startup allowing enterprises to ensure the product is activated with minimal user interaction |
| Storage Root | Location of Contributor's cache |
| Storage Encryption | Contributor can be configured to store its cache in encrypted form (using Windows Encrypting File system) |
| Web Proxy | You can configure Contributor to use: no proxy; the IE default proxy; or another explicitly-defined proxy |
| Use Synchronization Locking | A network database lock feature has been added that permits network users in Terminal Services environments to be logged-into CFS in multiple locations. This facilitates the usage of a common database file stored on the network by allowing all of the clients to negotiate which one has current control. This functionality can be found in the main toolbar of both the Contributor Client and the Outlook AddIn. |
| Disable SaveAs Prompting | Disable Prompt for Metadata using the FileManager when using the SaveAs function in an application. |
| User-Interface Settings | |
| Language | Override Contributors language setting: English, French, German, or Spanish (Castilian) or Spanish (Mexican) |
| Metadata Prompt | When content is added to Contributor, users are prompted to enter metadata. This can be disabled. |
| Disable Options Window | IT can completely disable user access to the options panel. |
| Custom Metadata Editor | Contributor supports 3 rd -party developed metadata editors. (For details contact sales@colligo.com) |
| Use Windows appearance | Contributor can be configured to integrate with the current appearance. Default appearance in similar to SharePoint. |
| Synchronization Settings | |
| Start Contributor on Windows startup | A shortcut to Contributor is placed in the user's "Start -> Programs -> Startup" folder. |
| Sync-On-Startup | Contributor will synchronize its cache when it starts up This may be disabled, e.g. in a large deployment to avoid a start-of-day peak in network traffic. |
| Sync-On-Change | Content is synchronized when it is changed. |
| Sync-On-Navigate | Contributor synchronizes the contents of a list when it is viewed |
| Background Sync | Can be disabled altogether. |
| Background Sync Interval | Default value is 30 minutes; minimum 15; maximum 1440 (1 day). |

| | |
|---|--|
| Download Lookup Lists | Content may use Site Columns to lookup data from another web within the Site Collection. |
| Create Documents in Single Transaction | Use a single transaction put to upload new content and set metadata. Default behaviour uploads content then separately sets metadata. The two-step approach may cause issues with event handlers, workflow or versioning. This setting affects only the initial upload of content, not content changes. |
| Office Integration Settings | |
| Require Framework 3.0 | The .Net Framework 3.0 runtime is required to integrate with the Office 2007 OpenXML file-format (for metadata mapping). The installer can be configured to not require the 3.0 Framework. This will silently stop integration with the OpenXML documents. |
| Outlook Add-In Settings | |
| Enable Outlook Add-In | The Installer can be configured to not install the Outlook Add-in (install-time setting) |
| Enable Outlook Lists | By default Contributor does not allow connecting SharePoint lists to Outlook. This feature is disabled due to a bug in Outlook 2007. Customers using Outlook 2003 can choose to enable support for SharePoint lists. |
| Enable Outlook Timer | When a large number of items are added to an Outlook folder the ItemAdd event does not fire. This is a well-documented Outlook issue. To resolve this issue Contributor can be configured to poll the Contributor folders. Enabling this option will cause a small CPU spike every 10 seconds. |
| Enable stssync | Office 2007 integrates with SharePoint 2007 sites to offer a “Connect to Outlook” option in the Actions menu. This option overrides the Outlook 2007 handler to connect to Contributor. NOTE: Office Updates may override the protocol handler. If the stssync handler is enabled we recommend testing compatibility before deploying. |
| Email Drag-and-Drop filename | Items added to a SharePoint document library must have a valid filename. When an email is drag-and-dropped in Outlook, Contributor must generate a filename. The format of this filename can be customized. |
| Force Send-and-File | The setting forces the use of the Outlook Send and File function and prevents the use of Outlook Send function. |
| Disable viewing of Outlook Attachment rules | Removes access to the Contributor Attachment Manager Rules configuration dialog, which is used to view/change the rules. This prevents a user from changing the value of the limits from within the user interface. |
| Total attachment size limit | The Contributor Attachment Manager Rules prevent a user sending emails with a total attachment greater than a configurable limit. Default limit is 10MB a value well above most email systems. |
| Warning attachment size limit | The Contributor Attachment Manager Rules warn a user sending emails with a total attachment greater than a configurable limit. Default limit is 10MB a value well above most email systems. |
| Outlook folder-name | It is possible to change the name and home-page of the Colligo for SharePoint folder in Outlook. |
| Outlook folder-url | |