



What's new in Colligo Contributor Pro 6.2

The screenshot displays the Colligo Briefcase application interface. The main window shows a SharePoint site 'Firestarter Portal' with a 'Sales' folder containing 'Contracts'. A table of documents is visible, including 'Contract Draft.docx', 'Contract_adrenaline bikes - Oct13.docx', and 'New contract.docx'. A 'Sync Issues' pane at the bottom shows a 'Conflict' issue for 'New contract.docx'. A system tray notification for 'Sync Error' is also present.

Online search on SharePoint

Display sync errors on folders or items

Display 'pending sync to SharePoint' items

Sort sync errors

Notify users of sync errors in Windows system tray

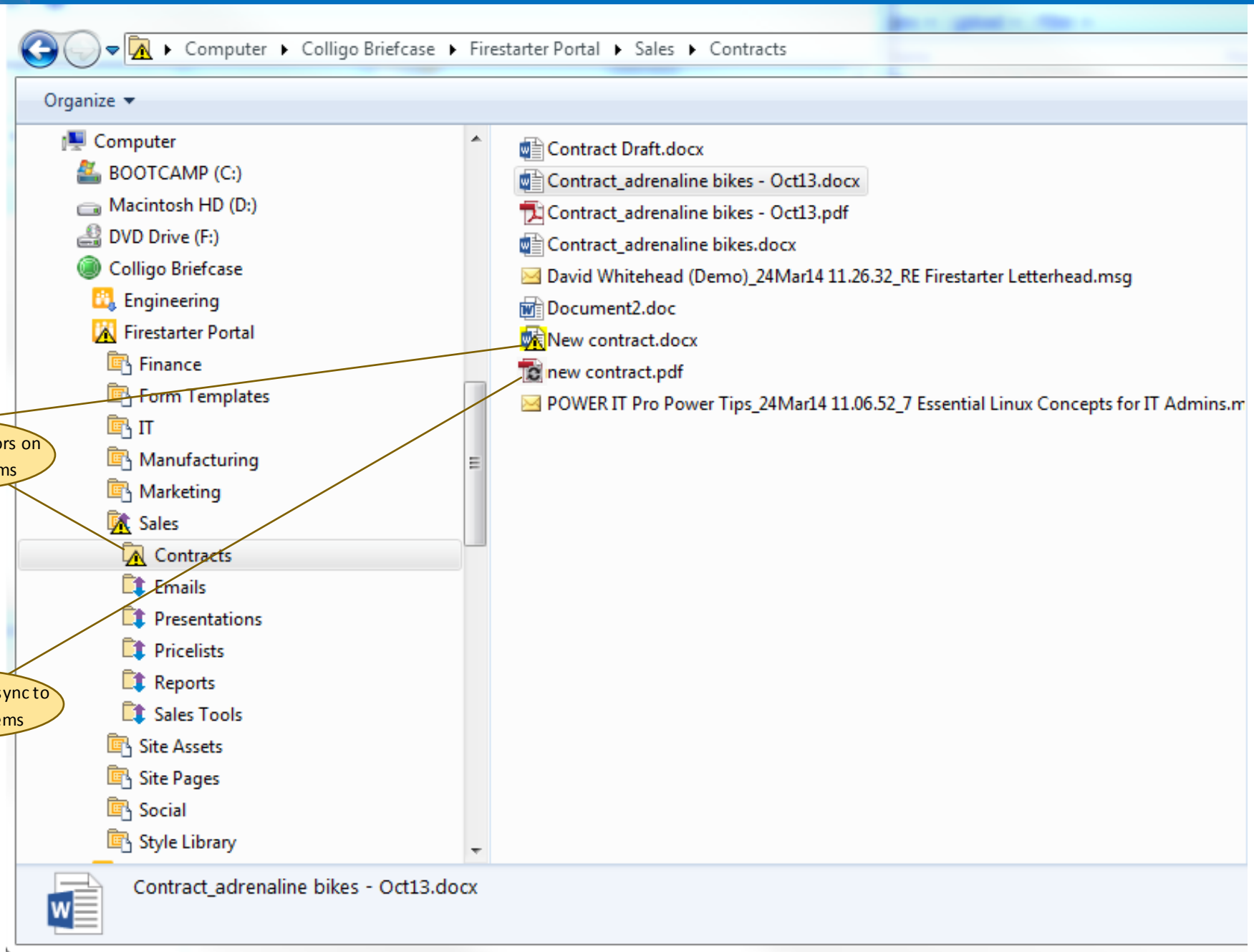
Name	Modified	Modified By	CC	From	Sent	Subject	To
Contract Draft.docx	3/26/20...	David Jackson					
Contract_adrenaline bikes - Oct13.docx	3/25/20...	David Jackson					
Contract_adrenaline bikes - Oct13.pdf	11/6/20...	David Jackson					
Contract_adrenaline bikes.docx	3/25/20...	David Jackson					
David Whitehead (Demo)_24Mar14 11...	3/24/20...	Helen Jones		Davi...	3/2...	RE: Fir...	D...
Document2.doc	3/26/20...	David Jackson					
New contract.docx	3/31/20...	David Jackson					
new contract.pdf	3/31/20...	David Jackson					
POWER IT Pro Power Tips_24Mar14 1...	3/24/20...	Helen Jones		PO...	3/2...	7Esse...	D...

Issue	Item	Site	List	Folder
Conflict	New contract.docx	Firestarter Portal	Sales	/Contracts

Sync Error
A sync error has occurred.
Please click this message for more information.
3/31/2014 1:54:59 PM



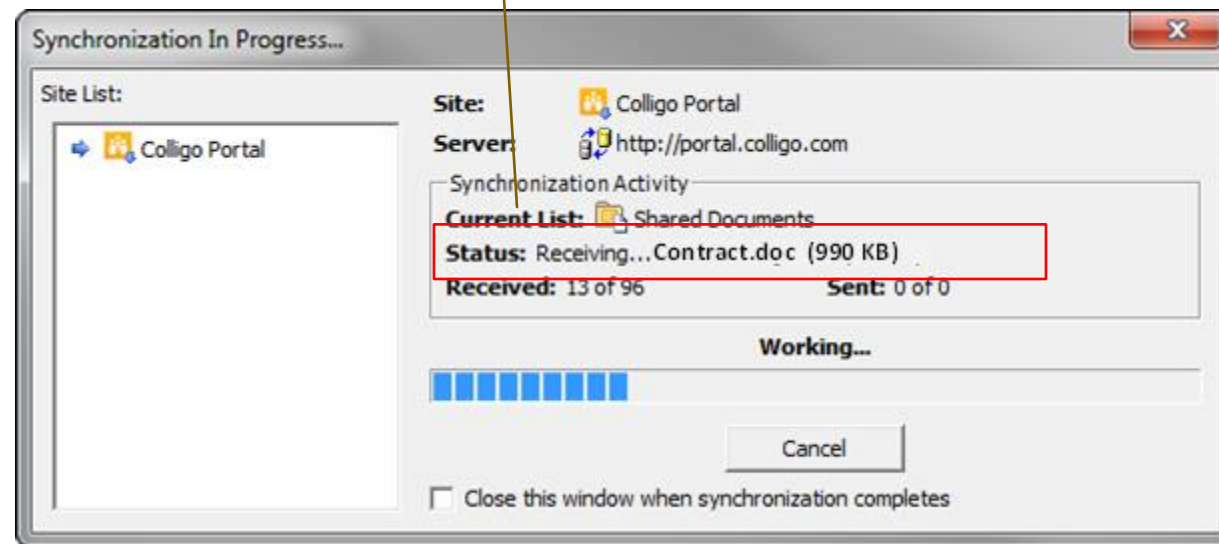
What's new in Colligo Contributor Pro 6.2





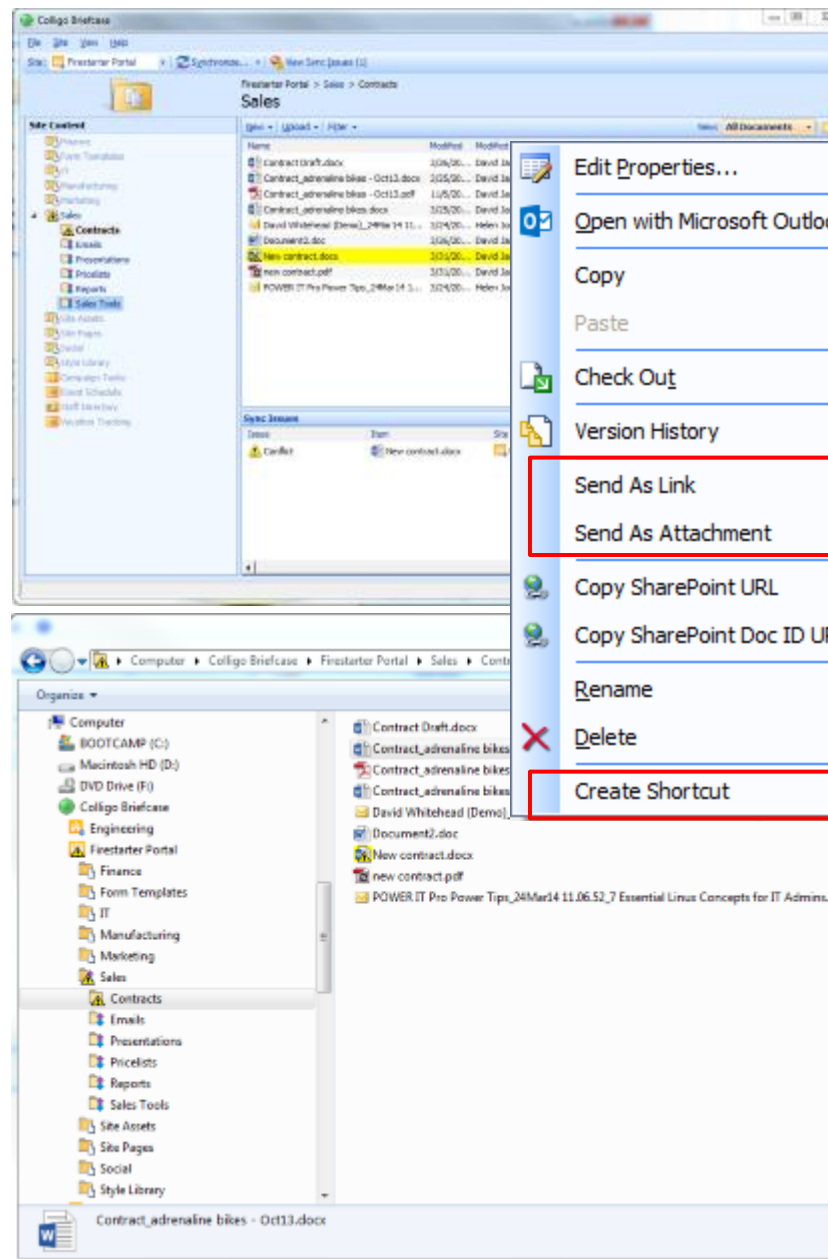
What's new in Colligo Contributor Pro 6.2

Display sync direction (receiving or sending),
file name and size during a sync





What's new in Colligo Contributor Pro 6.2





What's new in Colligo Contributor Pro 6.2

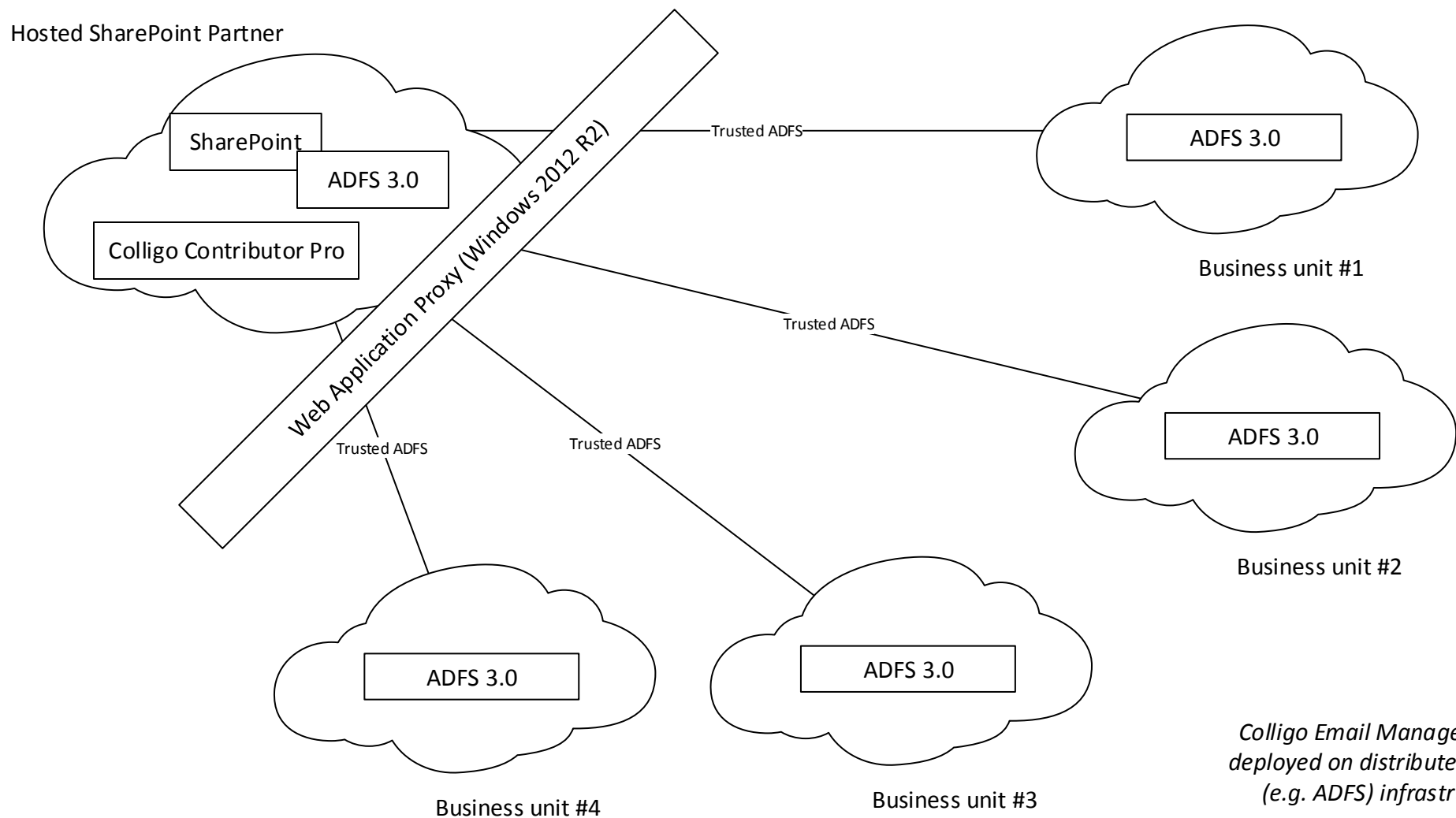
Copy and paste between interfaces

The screenshot displays two instances of the Colligo Contributor Pro 6.2 interface. The left window shows a SharePoint site with a file named 'New contract.docx' selected in a list. A context menu is open over this file, with the 'Copy' option highlighted in yellow. The right window shows a local file explorer view of the same file, with a context menu open over it, and the 'Paste' option highlighted in yellow. Both context menus include options such as 'Edit Properties...', 'Open with Microsoft Outlook', 'Check Out', 'Version History', 'Send As Link', 'Send As Attachment', 'Copy SharePoint URL', 'Copy SharePoint Doc ID URL', 'Rename', 'Delete', and 'Create Shortcut'. The 'Copy' and 'Paste' options are the new features being highlighted.



What's new in Colligo Contributor Pro 6.2

Distributed Identity management



Colligo Email Manager can be deployed on distributed identity (e.g. ADFS) infrastructure